

# Washington-Lee High School Education Foundation

annual bulletin 2017

[www.wlhsfoundation.org](http://www.wlhsfoundation.org)







## Our Mission

The primary mission of the Washington-Lee Education Foundation is to provide **criteria-based college scholarships to W-L graduates exclusively.** Each initial scholarship is for \$1,000. Students who are awarded a scholarship can reapply at the completion of each undergraduate college year, with the potential of receiving up to \$4,000 over four years. Initial scholarships and renewals are competitive.

A secondary mission of the Foundation is to provide a small number of **professional development fellowships to faculty members on continuing contract.** The Foundation board recognizes that assisting W-L's professional staff through extended professional learning opportunities can directly enhance the high academic standards and classroom rigor for which our school is noted.



above

**Theresa Severin, the Choral Director, joins W-L alum Carl Tanner '80, for a duet during the Choral Arts Winter Concert.**

left

**Dr. Baxter conducts the Chorus in 1964.**

The performance took place in Campbell Gymnasium. (APS archives)

---

### cover photo

The Concert Choir, Chorale, and Madrigals perform with alumni **Carolyn Forte '03** and **Carl Tanner '80** for "A Night at the Opera" in the W-L Performing Arts Center this past December. **Theresa Severin**, the Choral Director, is one of the Foundation's faculty fellows for 2016. She joined alumnus Carl Tanner, one of opera's most accomplished tenors today, for a duet. The evening's performance included Mozart's *Viva Amore* and traditional Christmas selections like Adolphe Adam's *O Holy Night*.

Cover photo by W-L senior **Shane Armstrong, '17**. For more W-L photos see our website's gallery @ [wlhsfoundation.org](http://wlhsfoundation.org)

---

## Financial Report

Tom Chisnell '69, Treasurer

<b>Starting balance 1/1/2016</b>	\$34,536.61
<b>Income</b>	
Contributions	\$48,239.99
<b>Expenses</b>	
39 Scholarships	\$39,000.00
3 Fellowships	\$1,685.00
Printing	\$8,565.42
Mailing	\$4,000.00
Bulk Mail permit	\$225.00
Office expenses	\$455.00
Tax preparation	\$1,200.00
<b>TOTAL EXPENSES</b>	\$55,130.42
<b>Ending balance 12/31/16</b>	\$27,646.18
<b>Annuity</b>	
1/1/2016	\$341,993.19
12/31/2016	\$352,224.46
Value increase:	\$10,231.27

## Message from the President

Dede Cianciosi Macekura '73  
Foundation President

I am happy to report that the Foundation's fiscal health continues to be sound, as evidenced in the Treasurer's Report, thanks to the generosity of alumni, staff, and community donors. Whether you were a first-time donor or one of our many annual contributors, **your gift makes a difference.** In 2016 we were able to fund 14 scholarships to Washington-Lee seniors, and 25 scholarship renewals. Additionally, we funded faculty fellowships to four W-L teachers, which is the most ever funded by the Foundation in a single year.

We received applications from 68 seniors, and I want to thank our board members, all of whom very carefully read and evaluated each application. **How do we choose? It isn't easy.** Each application is scored individually by all 11 board members in five categories: academics, writing, extra-curricular activities and/or family responsibilities, educational goals, and financial need. Once the scores are tallied, those with the highest scores are selected. The number of scholarships awarded each year is dependent upon the contributions we have received.

I want to give a big shout-out to the Foundation board members, who bring many diverse talents and perspectives. The Board

includes 6 current or former W-L staff; 6 W-L alumni; and 2 former very active W-L PTA Presidents. Three of the 6 former staff are also alumni! I want to congratulate Tom Chisnell and Sarah Harrick Congable, who were inducted into the W-L Athletic Hall of Fame. Both are former W-L students, teachers, athletes, and coaches. Also, W-L teacher Paul Bui was named one of "40 Under 40," by the Leadership Center for Excellence, honored for his professional and civic contributions in Arlington. It is truly an honor to work with this group who volunteer their time out of love for our school and a commitment to its students.

Taking a look at the list of W-L Foundation donors, you will notice that the alumni from our earlier graduating classes make up the highest percentage contributing to the Foundation. **In order to sustain scholarships in the future, we will need many more alumni from the 1970s, '80s, '90s, and 2000s to join us as contributors.** I encourage you to give any amount you can, and help these impressive kids move on to college. Collectively, we can continue to help send our W-L graduates out into the world to make their mark and make a difference!

## Two Organizations, Two Purposes

Although we are two separate organizations, the W-L Education Foundation and the W-L Alumni Association both support the school and its alumni, just in different ways.

The Foundation's sole mission is to provide scholarships to W-L graduates and faculty fellowships to W-L staff. You are receiving this annual bulletin from the W-L Education Foundation, which is our principal outreach to raise funds for scholarships.

If you visit the Alumni Association's webpage through the link on the W-L site, it will provide you with an idea of all the activities they engage in and the class information they maintain.

The Foundation and the Alumni Association help one another regularly. The Alumni Association generously contributes financially to the Foundation each year, and also

shares address updates and death notices with us. The Foundation provides space in this bulletin each year for the Alumni Association to reach out to all alumni, and we, in turn, share address changes we receive.

We encourage you to make a contribution to the Foundation, and also to take a look at the Alumni Association page at the end of this bulletin and join/donate to them as well, via a separate envelope.



## Foundation Board

Paul Bui  
Tom Chisnell, treasurer  
Sarah Congable, vice president  
Erica Drucker  
Ann Felker, secretary  
Linda Henderson  
Phil Krauth  
Dede Macekura, president  
John C. Peck  
Ron Revere  
Mary Lib Tomb  
William J. Sharbaugh, member emeritus

.....  
Contact us via US mail, phone, or email:

Washington-Lee High School  
Education Foundation, Inc.  
P.O. Box 41595  
Arlington, VA 22204

703-525-4722  
wlhsfoundation@gmail.com

.....  
The Foundation is a 501(c)(3) nonprofit organization. Donations are fully tax deductible.

.....  
[www.wlhsfoundation.org](http://www.wlhsfoundation.org)

Facebook - Washington-Lee High School Education Foundation, Inc.  
Twitter - @WLHSFoundation

## Many Ways to Donate

Your contribution in any amount is always welcomed and appreciated, and all contributions are tax deductible. You can contribute to the W-L Foundation in several different ways:

- By check, payable to "W-L Education Foundation, Inc."
- Through Paypal, either with a one-time or recurring donation
- Employer match programs
- By shopping through AmazonSmile.com, and indicating the W-L Education Foundation as your charity of choice
- Through your Estate Planning

A special thanks to **Shane Armstrong '17** our student photographer for the 2017 *Bulletin*.

## W-L Experiments with Alternative Learning Environments

Sarah Harrick Congable '95

Many Washington-Lee students are engaged in a school day that looks and feels very different than it did even two years ago. Recently, two major initiatives have allowed W-L students to modify what a traditional school day looks like: access to online classes and more flexible scheduling. Both initiatives allow students to experience a learning environment more commonly found on modern college campuses, but with the supports they still need as high school students. And, resoundingly, students are thankful that W-L is providing them these opportunities to diversify their learning profiles.

The Virginia Department of Education has a new requirement that all public school students participate in an online learning experience before they graduate. The goal of the mandate is to better prepare students for the ever-growing number of collegiate courses offered digitally, rather than on a traditional campus. APS offers a completely

online Economics and Personal Finance course, but W-L has come up with a unique alternative in “blended learning” courses. W-L offers two courses, Economics and Personal Finance and IB Economics, in which a percentage of the learning occurs through a digital platform, but students still attend the class during a particular period of the day with an assigned teacher. In this way, students are engaged in online learning, but they also have an in-person community of peers and a teacher.

Mr. Steven Brown teaches both the completely digital APS course, as well as multiple sections of W-L’s blended Economics and Personal Finance course. He reflects that this environment “provides a good learning opportunity for students to experience online classes without the high stakes of paying for a college course.” He has enjoyed creating a personalized learning environment in which he can truly differentiate the content and tailor his instruction via technology. Students use their personal MacBook Airs provided by APS, as well as traditional textbooks.

In a blended learning class, all of the students make progress through the curricular requirements, but can do so at varying paces. The teachers are not disseminating

content to all students at the same time by standing at the front of the room and lecturing or handing out daily activities; rather, the information is available online at any time for students to access when they are ready. Mr. Brown works hard to ensure that “everybody gets what they need, which is not necessarily the same thing in the same sequence at the same time.”

Teachers spend most of each class period meeting with kids individually to make sure they are making adequate progress in understanding and completing course requirements. If you walked in to observe one of these classrooms, the environment might look and feel like a tutoring lab in which some students are working individually, others are working in groups, and others are working directly with a teacher. Mr. Brown’s students are enjoying this unique learning experience. Says Maddie Albro, “My teacher is available to help me, but I can lead my own learning. The semi-structured nature of this course makes it unique [in that it] helps me teach myself to manage my time while learning important skills for adult life. I still have a fair amount of freedom in doing my work, but with a skeleton schedule and a teacher who can help me.” It certainly seems that any

## Engineering Success

Erica Drucker '00

Of all the ways in which Washington-Lee helped scholarship recipient Kevin Salvador prepare for college, two stand out to him. The first is his Calculus and Theory of Knowledge teacher, Mr. Przydział, whom he credits with making him fall in love with math. “He tore down professional barriers between teacher and students. He had really frank conversations with us. He helped me understand that math was actually a language. He completely opened up my learning potential.”

The other is an elective Design Tech class that opened his eyes to the world of engineering. After learning about every device and machine used in the wood shop, Kevin’s first project was to make a Jenga® set. He did everything from concept development, to dimensioning, to material selection, finally building all of the blocks and the wood frame. “It turned out to be a really nice product that I had made myself. I was proud of it.”

Kevin grew up in South Arlington, where his home school was Wakefield High School. But after hearing about his sister’s

experience with the IB program at W-L, he made the transfer and never looked back. By the time he was a high school senior, he knew he was interested in engineering. When he visited Virginia Tech, he remembers touring the Engineering Department, in awe of the elaborate 3D printers, state-of-the-art laboratories, and sophisticated robotics. He was sold.

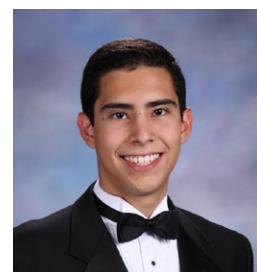
Kevin applied for, and received, a scholarship from the Washington-Lee High School Education Foundation in 2013. When he arrived at Virginia Tech, he immediately began seeking out opportunities to put what he was learning into practice: “Engineering is a lot of complex concepts – things like mechanical materials and vibration analysis. It was a lot of PowerPoint presentations, charts, graphs—really dry material. It was hard to understand, so I thought, ‘How can I use this in everyday life? How can I apply this?’”

Kevin joined Formula SAE, a top student design team that built racing cars for competitions from scratch. No money is allocated, so the team is also responsible for raising money by soliciting sponsorships or grants to buy materials for the car. As part

of the suspension team, he collaborated with all different kinds of engineers to help build the car. “It forced me to think like an engineer,” he says.

Now in his final year of college, Kevin is working on his senior design project with Dominion Power, helping to create a testing device that measures corrosive chemicals in nuclear power plants. When he graduates next spring, he hopes to return to the DC area and find a job in mechanical engineering. “I really like coming up with novel ideas to fix problems. I want to change people’s lives and make them better.”

*Kevin Salvador is a 2013 graduate of Washington-Lee, and a W-L Education Foundation scholarship recipient.*





student could translate these skills nicely into future educational settings.

Another way W-L is attempting to better prepare its graduates for college is by offering flexible scheduling, or Generals Flex. By senior year, many students need only a few verified course credits in order to earn their Advanced Diploma, but they are required to take a full course load of seven classes regardless. Traditionally, those students filled their schedule with elective courses, but Generals Flex allows students in good standing to take only the courses they need and then be excused for the remainder of the school day. It mirrors a university environment, where students take the courses that are necessary to earn a specific degree.

In the past two years that Generals Flex has been offered, about 160 students have elected for this kind of modified schedule. The adjusted school day looks different depending on the student and which course(s) they need to graduate but, for most participants, this modified schedule simply means their school day does not end at 3:00; it either ends at 1:30 p.m. daily or 12:00 noon every other day. As Rachel Cotton put it, "I knew that I could do more with my time instead of filling my schedule...now I get to

spend the extra time doing something productive and worthwhile."

W-L students choose Generals Flex for a wide range of reasons, and the W-L Counseling department reviews each request carefully to ensure that it is an appropriate response to the unique needs of the student. For example, some students who participate in athletics found themselves short on time to complete homework, so a regular early release Flex schedule gives them some extra time. Other students report this option simply allows them to enjoy focusing on the course content with greater depth, as in a traditional college setting. Diego Mamani reports that, thanks to his flex schedule, he "spends more time on homework than [he] used to, and still goes to bed earlier than last year."

W-L's strategic attempts to meet the needs of the whole child have been successful thus far, enabling these Generals to be better prepared for a learning life beyond high school. A 21st century education certainly looks different than yesteryear, and will be likely to continue changing faster than we can keep up. Kudos to W-L for keeping pace...and more!

## Projected Overcrowding Leads to Smaller W-L Attendance Zone

John C. Peck '96

No boundaries process is without some controversy, as neighborhoods strongly identify with their high school. This is especially true of W-L, Arlington's oldest high school. But faced with the school's growing student population, the Swanson, Thomas Jefferson, and W-L PTAs strongly supported rezoning W-L students to neighboring Wakefield and Yorktown. The recently retrofitted W-L campus is still too small to accommodate the few hundred additional students projected to attend the school over the next four years.

A brief two-month schedule of community meetings, APS staff work, and School Board meetings led to various boundary options. There were difficult discussions amongst most everyone involved and numerous letter-writing campaigns. In the end, the School Board voted to rezone 400 students over the next four years. The board exempted students who currently attend W-L, as well as any younger siblings who will be concurrently enrolled with an older sibling. W-L loses both the Woodmont neighborhood, where Sandra Bullock lived, and Dominion Hills, the former home of Warren Beatty and Shirley MacLaine, to Yorktown. Arlington View, a historically African American community that is home to Hoffman-Boston Elementary School, was rezoned to Wakefield.

Reaction to the new boundaries has been mixed. The boundary change's effect on demographics and diversity has gained the critical attention of some local students and residents, as well as the *Washington Post*. However, with the planned construction of additional high school seats in Arlington to address continued student growth, another round of high school boundary changes will likely be on the horizon.



left

### Socializing during first lunch period

First floor hallways serve as an informal space for socializing, eating, and studying at lunch, creating a college-like atmosphere. With rising enrollments across the nation, more schools are embracing less restrictive lunch time procedures. A long-standing policy allows seniors to eat off campus.

## Cordero, Burgos, Severin, and Isobe Receive Faculty Fellowships

---

### ANDREA CORDERO & ELIZABETH BURGOS

On October 8, 2016 Andrea Cordero, W-L Spanish teacher, and Elizabeth Fucella Burgos, Resource Teacher for the Gifted, presented at the Foreign Language Association of Virginia's annual conference. Their session, "Teaching Languages: Mining the Growth Mindset Lens," encapsulated collaboration that focused on the texts: *Mindset* by Carol Dweck, *Mindset in the Classroom* by Mary Cay Ricci, and *Advancing Differentiation* by Richard Cash. They planned, executed, and reflected on lessons, providing an opportunity for advanced differentiation and development of a growth mindset.

In their session, participants were surveyed about their place on the growth mindset continuum, reflecting on the data and their own capacity for growth. Teachers participated in a Socratic Seminar discussion of neuroplasticity and student achievement. Cordero recounted a series of lessons implemented in her classroom incorporating the message that endurance, perseverance, and resilience play a huge part in overcoming the academic challenge of learning a second language.

Ms. Cordero and Ms. Burgos expressed their gratitude to the W-L Education Foundation for helping to defray their expenses for attending the conference.

---

### HIROMI ISOBE

Thanks to the generous support from the W-L Education Foundation's faculty fellowship, I was able to attend the Educators ArtLab at the Kansas City Art Institute this past summer. I was selected among secondary teachers from all over the United States to join a weeklong painting workshop. The college professor worked with 14 of us to create landscape paintings. We visited museums, art galleries and artists' studios. It was an intense week working late at studio every night. I learned new ideas, and I was inspired by art that we saw. I bonded with like-minded educators from different parts of the country. This experience refreshed my mind and reminded me of why I love teaching art to students at Washington-Lee High School.

---

### THERESA SEVERIN

I would like to thank the Washington-Lee High School Education Foundation for the generous grant so that I could attend the 2016 Choral Conductors Workshop last summer. I joined 40 other choral conductors from across the United States to work with one of the greatest choral music educators, Dr. Rodney Eichenberger. The course was a week long and the participants were members of Rodney's choir as we sang through over 150 pieces of choral music, all selected by Dr. Eichenberger. I was one of 15 student conductors who received private instruction and critique from Dr. Eichenberger as the rest of the class became my choir.

Throughout the week, I learned something from each and every conductor in the class. Just watching them work with Dr. Eichenberger every day I was able to add more ideas for my "conductor's tool box." It has always been my view that most issues in

choral music teaching and/or more specifically choral conducting can be solved in several different ways. To solve these issues a conductor must have a set of tools to apply quickly to any rehearsal situation and watching the conductors work reminded me of the many "tools" we have at our disposal. Thinking and planning to incorporate these tools before the rehearsal will make my time with the students more efficient and, in the end, result in better performances.

My eyes have certainly been opened on how I conduct and how that might impact my singers in their growth and enjoyment. I have very talented students who I would like to take to new levels and expose them to more and more exciting choral literature. Thank you, again, for your generous gift and for all that you do for the Washington-Lee community.







left

**Hiromi Isobe's Art 1 class**

Students brainstorm for the final project of the mixed media unit that featured the artwork of Colette Fu (displayed on the SmartBoard in the background).

opposite page and below

**Burgos (opposite page) and Cordero (below)**

In this IB Spanish classroom, students analyze art. Collaboration among teachers develops capacity to meet a diverse range of learners' needs and guarantees everyone is appropriately challenged.



# Scholarship Recipients for the Class of 2016

Generous donations from supporters enabled the Foundation to award fourteen \$1,000 scholarships to graduating W-L seniors. Their academic and co-curricular high school achievements and their college plans are summarized below.



**JASMINE BEN HAMED**

Jasmine received an IB diploma and is now a freshman at American University's School of International Relations. She was on the Honor Roll every quarter for all four years; was a member of the girl's Tennis team (captain for two years); a staff reporter for *Crossed Sabres*; a member of Sisters on Purpose, SPEAK, Do Something; and a Connect Mentor. She also had an internship with the Tunisian Community Center.



**RACHEL CRULL**

Rachel was a four-year Honor Roll student and participated in numerous activities at W-L, including Young Republicans, Computer Graphics Club, and Photo Club. She also served as president of FCCLA. Rachel volunteered at her church's daycare center and currently attends Northern Virginia Community College. She plans to transfer to Bridgewater College and pursue an elementary school teaching degree.



**HAZIEL ANDRADE**

Haziel was involved in the Do Something Club, Latin American Student Association, Feminism Activist Club, and National Honor Society. She also participated in Crew, Cheerleading, and Gymnastics. Outside of school, Haziel was a member of the Arlington Teen Network Board and a local reporter for *Affinity Magazine*. She is studying Biology at Virginia Commonwealth University.



**LYDIA CAWLEY**

Lydia is a true student of the Classics. She created and taught "Club Olympus," writing a syllabus to teach Latin, Ancient Culture, Art, and History to 5th graders. Lydia was vice president/president of the Community Action Club, founder/president of the W-L Classics Club, a member of the Debate team, a Connect Mentor, and a member/captain of the girls Basketball team. Lydia is a first-year student at Harvard University.



**NARGILMAA KHANGARID**

Nargilmaa received an IB diploma and is now a freshman at George Mason University at the School of Engineering. Nargilmaa participated in Model UN, Key Club, HILT Mentoring/Tutoring, and Do Something Club. She also was a member of the Indoor Track and Volleyball teams. Outside of school, she was a camp counselor for the Columbia Lighthouse for the Blind.



**EMNET ATLABACHEW**

Emnet was on the Track and Field team and a member of the National Honor Society. Her volunteer work included teaching Sunday School and serving as a camp counselor at the Ethiopian Community Center. Emnet also worked at a local toy store. She currently is a first-year student at Johns Hopkins University with plans to pursue a pre-med track and become a doctor.



**KAREN CORDOVA-PEREZ**

Karen joined the Latin American Student Association and was a member of the GOALS-HILT Mentoring Program. During her junior year, she founded the I Love Korea Club to pursue her fascination with Korean culture. Karen is currently a freshman at George Mason University, where she is involved in the Korean Student Association and taking classes that will prepare her for a Psychology major with a pre-med track en route to medical school.



**AMANDA OH**

Amanda was a member and one of the leaders of the W-L Lincoln-Douglas Debate Team. She founded the Tea Party Club, tutored elementary-age students, led her church's youth group, and played in her church band. During her senior year, Amanda interned at the consulting firm, Social Impact. She attends Southern Methodist University with plans to major in History with the eventual goal of entering a joint PhD/JD program.





**ANA  
ORTIZ**

Ana came to W-L in her sophomore year and immediately became involved in the Latin American Student Association, served as treasurer (and president her senior year) of the Direct Relief International Club, and participated in the GOALS Tutoring Program. She also was involved with the Emerging Leaders Program. Ana is now a first-year student at Virginia Commonwealth University's School of Humanities and Science.



**ELISABETH  
RIOS-BROOKS**

Elisabeth was a member of the Multi-Racial Club, founded and served as president of the Ladies in the Lead Club, and was a member of both the Asante Mariamu Club (president her senior year) and the Spoken Word Poetry Club (president her senior year). She received an IB diploma and is a freshman in the University of Florida Honors Program with plans to major in Linguistics and Anthropology.



**SASHA  
VOLODIN**

Sasha spent a significant amount of her after-school time dancing in a pre-professional program. She took classes in ballet, jazz, and modern dance; participated in community performances; and was a teaching assistant. She was in the school orchestra and also was a math tutor, VJAS mentor, and a Connect Mentor. Outside of school, she helped remove invasive plant species in local parks and neighborhoods. Sasha is a freshman at Carnegie Mellon.



**SAMUEL  
PHELAN**

Sam helped in founding two clubs at W-L—Whiffle Ball and Entrepreneurship—and was a ranking member in several clubs. He was a member of the Guitar Ensemble, coordinated a school-wide book drive for the Philippines, and represented W-L at a District Convention for local Key Clubs. Outside of school, he participated in numerous volunteer activities. Sam attends New York University's Computer Science program with a minor in Film.



**DYLAN  
SCHULER**

Dylan was a member of the Marching and Symphonic Bands for all four years, serving as Section Leader for the clarinet section his senior year. He also was active in theatre—building sets, making costumes, and designing the sound. Dylan was a member of the Asante Mariamu and Do Something Clubs, and was a Connect Mentor. He attends the University of North Carolina at Chapel Hill, majoring in Biology with minors in Chemistry and Environmental Science.



**ALEXANDRA  
WEBSTER**

Alexandra was a four-year member of the Gymnastics team (co-captain her senior year) and a Varsity Cheerleader for two years. She participated in Model UN (serving as Secretary-General her senior year), National Honor Society, and Young Democrats; was a math tutor and a Connect Mentor; and volunteered at a summer gymnastics camp. Alexandra attends the University of California, Berkeley and is studying Molecular and Cell Biology.

**Morris Levin**, who coached the Generals to three state basketball titles, speaks with former standout player **John Hummer '66** after the **2017 Athletic Hall of Fame ceremony** held prior to the evening's boys varsity game (below left). Coach **Bobby Dobson** and assistant coach **Justin Diggs '01** talk to the boys varsity team during a timeout (below right). Morris Levin gave the team a quick pep talk prior to the game. (photo on the right by Patrick Kane / DMVpix.com)



# 2016 Renewal Recipients

*Foundation scholarship recipients are eligible to reapply for assistance throughout their college experience. The following brief summaries highlight the progress of our twenty-five 2016 scholarship renewal recipients and illustrate the impact of your donation.*

**Shalma Akther** is a junior in the Honors College at Virginia Commonwealth University, where she is majoring in Business and minoring in Spanish. She holds leadership positions in the Student Government Association, and is an ambassador for the School of Business. This year, she is working as a Resident Assistant and a Teaching Assistant while volunteering for an emergency food pantry and animal sanctuary.

**Charles Argon** began his senior year at Princeton after studying in Beijing last year. He recently decided to focus his senior thesis on China's early modernization in the 19th century, and was awarded funding to conduct research in both China and Princeton. Charlie also penned a paper that was published by a peer-reviewed academic journal. Having already taken several graduate level courses, he plans to pursue a Ph.D.

**Ariel Bobbett** is a senior majoring in Earth Systems at Stanford University. She continues to be heavily involved in sustainability efforts on campus, sitting on the Executive Sustainability Committee for the Associated Students of Stanford University. She spent last summer in Hawaii conducting tropical ecosystem ecology research, and presented the preliminary findings at the Hawaii Ecosystems Conference.

**Margaret Burgos** is a senior at Colby College. Last year, she had the opportunity to study abroad with the "Social Justice and Sustainable Development" program in Fortaleza, Brazil. She spent four months living with a Brazilian family, learning Portuguese; taking courses on race, gender, and society; and conducting research, and presenting her paper at the end of the semester. Maggie is the captain of the Women's Rugby team.

**Kyle Chipman** is a junior who is majoring in Economics and minoring in Finance at Vanderbilt University. A Dean's List student, he is a senior analyst for a student-run organization that manages a portion of the University's endowment, and serves as the Head Resident Advisor, where he oversees all resident advisors in his building. Kyle also volunteers for an organization that addresses post-deployment veterans' issues.

**Jesse Chung** is a junior at Bowdoin College studying Environmental Studies and Economics. He is on the Dean's List and is a Sarah and James Bowdoin Scholar. Last summer, Jesse received a fellowship from Bowdoin's Robert S. Goodfriend Summer Internship Fund to support his work as an intern at Conservation International. He is a writing assistant for the Bowdoin Writing Project and a leader for the Bowdoin Outing Club.

**Louisa Doyle** is a junior studying Computer Science and Art History at the College of William and Mary. She is the president of Building Tomorrow, a service club dedicated to fundraising for building primary schools in Uganda. Louisa is also a part of Project Phoenix, where she tutors local middle school students.

**Rebeckah Fussell** is a sophomore at Haverford College. She is heavily involved in Haverford's Microfinance Consulting (HMFC), a group that helps underserved entrepreneurs in Philadelphia build their businesses, and currently serves as the treasurer. Rebeckah is an usher with the Music Department, as well as a Math and Spanish tutor. Over the past summer she had the opportunity to work for the Hillary Clinton campaign.

**Elizabeth Grossmann** is a senior at Christopher Newport University. She is on the Dean's List, and was admitted into the Alpha Chi honor fraternity, which only selects the top 10% of the CNU student body. Elizabeth was recently accepted into CNU's Masters of Arts in Teaching graduate program. She continues to be an active member of Phi Mu and a member of the prestigious President's Leadership Program.

**Rita Hagos** is a sophomore studying Kinesiology and Public Health at the College of William and Mary. She is a William and Mary Scholar and participates in the William and Mary Scholars Undergraduate Research Experience (WMSURE). During her first year, she was active in the African Cultural Society, which allowed her to perform at IREP, an annual multicultural showcase featuring dances, singing, poetry, and step.

**Danielle Harris** is a senior at the College of William and Mary majoring in Africana Studies and minoring in African Diaspora. This year, she completes her senior capstone, a three-step project aiming to strengthen the teaching of African History in Williamsburg Public Schools. Danielle is a resident assistant and the service chair for the Filipino American Student Association. Last summer she interned for USAID in the Africa Bureau.

**Peter Hazel** is a senior at the University of Virginia, where he is an Echols Scholar. He is a dual Philosophy and Film Production major. Last year, he was one of five students selected to receive the University Award for Projects in the Arts, and received funding to work on his thesis film. In February, the Czech language film that he made while in Prague, entitled *Utěk* (Runaway), was accepted by the Virginia Student Film Festival.

**Arielle Hogan** is a sophomore studying Biology at the University of Virginia. She is on the Dean's List and was accepted into UVA's chapter of the National Society of Collegiate Scholars, which provides financial and leadership opportunities for students. Arielle says "Everyone I meet at UVA motivates me to do better and strive for more."

**Rida Hussein** is a sophomore Biology major and Business minor at George Mason University. She is on the Dean's List and hopes to go on to medical school to become a physician's assistant. As a commuting student, she adjusted to taking the train and shuttle and focused on adapting to her new lifestyle, hard coursework, and exploring extracurricular offerings.

**Noah Kennedy** is a sophomore studying Chemical Engineering in the Honors College at the University of Delaware. During his freshman year, he was accepted into the American Institute of Chemical Engineers (AIChE) and hopes to run for office. He was a coxswain for the Delaware Lightweight Rowing Team and is the fundraising chair for the Triathlon team.

**Aaron Patrón** is a junior at George Washington University studying Engineering and Sustainability. He was a solar scholar with the GW Solar Institute, and interned with a solar finance firm during the summer of 2016. As part of the GW Mini Baja Team, he plays a role in designing and building components of a car using computer-aided design, and competed at the Society of Automotive Engineers Baja Competition at Tennessee Tech.



**Hailey Ramsey** is a sophomore studying Neuroscience at the College of William and Mary. Last year, she was awarded “Outstanding Underclassman” by the Omega Order for her work in risk management with her sorority. As secretary of Take Back the Tap, a sustainability group that aims to reduce the use of plastic disposable water bottles on campus, she helped rally one-third of the campus to pledge to use reusable water bottles.

**Emily Reed** is a sophomore at Barnard College majoring in History with a concentration in Rights, Law and the State. This past year, she was awarded the Guggenheim Foundation Oscar S. Straus II Fellow in Criminal Justice Internship with The Bronx Defenders, a public defense organization that works to defend the accused in the Bronx. She is on the Dean’s List and is the social chair of the Women’s Rugby team.

**Kevin Salvador** is a senior at Virginia Tech. He applies his Mechanical Engineering degree to Formula SAE, a student race car design team, as well as the Galileo Engineering Learning Community. He is a member of Latin Link, which helps promote Latino heritage through social and educational events throughout campus, and the head of the Event Committee for Circle K International, a service organization.

**Anna Santiago** is a junior at Colgate University with a double concentration in Peace and Conflict Studies and Spanish. She was fortunate to study abroad last fall in Cuba. She continues to be involved in the Sidekicks Program, this year as a Leader, and spends her time organizing activities and philanthropic events in support of the program. Anna is a member of Gamma Phi Beta sorority.

**Mackenzie Scurka** is a sophomore at Dartmouth College. She was accepted into the prestigious Hill Winds Society, a student ambassador organization that connects alumni to students. She also accepted a research position studying the circadian rhythms in crops, and interned with a company that plants farms on roofs in D.C. to grow produce and reduce runoff water pollution. She plans to double major in Biology and Environmental Studies.

**Rebecca Spraggins** is a sophomore majoring in Political Science at Syracuse University. She is a part of the Renee Crowne Honors College and a Founder’s Scholarship recipient. Rebecca was a member of the women’s Rowing team and competed in the NCAA National Championship. She is on the Dean’s List.

**Brian Tran** is a junior studying Sociology and Psychology at Virginia Commonwealth University. He is a cultural ambassador for VCU’s English Language Learning Program, and a member of the Active Minds Club, a group that spreads awareness about mental health issues on campus. Brian also participates in VCU’s Globe Program and is on the Dean’s List.

**Trang Vo** is a sophomore at Virginia Commonwealth University. She is the cultural/educational chair of VCU’s LiNK (Liberty in North Korea), a non-profit that helps North Korean refugees escape North Korea, and a member of the Pre-Pharmacy Association. Trang was accepted into LEAD (Leaders Engaging in Advanced Discovery), a living, learning community that focuses on helping students develop leadership skills.

**Diana Voronina** is a second-year student studying Mathematical Science and Computer Science at Virginia Commonwealth University. At VCU, she is the fundraising chair for the Phi Alpha Kappa Transfer Society and a Resident Assistant. She is on the Dean’s List and was accepted into the Honors College for her sophomore year. Because of all her IB credits from Washington-Lee, Diana has earned junior standing.



**Generals Radio** currently broadcasts the girls and boys home basketball games against district rivals like Yorktown, McLean, and Langley. During halftime, **Sam Yarnell '18**, the play-by-play announcer, interviews **Lucas Mendes '16**, the Gatorade National Soccer Player of the Year, who helped lead W-L to a state title last June. For the South Lakes game, Sam was joined by **Steve Buckhantz '73**, the Washington Wizards’ long-time television play-by-play announcer.

# Donor List

*Alumni from 1930s to the 2010s, alumni parents, current and retired faculty, and members of the community have generously given to the Foundation this past year.*

## Contribution Levels:

*Brigadier General, \$1-\$499 \**

*Major General, \$500-\$999 \*\**

*Lieutenant General, \$1000-\$2499 \*\*\**

*General, \$2,500-\$4999 \*\*\*\**

*General of the Army, \$5000 and up \*\*\*\*\**

♦ denotes a sustaining benefactor

## ALUMNI BY CLASS

1933	♦Friedman, Virginia Rees*		♦Crown, James*		♦Mills, Thomas*
1939	♦Kehoe, Barbara Riggs England*		♦Hill, Ronald*		♦Mulloy, Jack*
1941	♦Stevenson, Florence*		♦Robbins, Patricia Moran*		♦Williams, James A.*
1942	♦Clark, Patricia Pumphrey**	1954	♦Conte, Jean Wubbold*	1961	♦Buechner, William*
-	♦Porter, Adele*	-	♦Crook, Dudley*	-	♦Coker, Wesley*
-	♦Taylor, Betty*	-	♦Eckbreth, Cathy Ogilvie**	-	♦Glancy, Suzanne Black*
1943	♦Cradlin, James*	-	♦Good, F. David*	-	♦Heberlein, James A.*
-	♦Hall, Frances Smith*	-	♦Horton, Roy*	-	♦Knipling, Gary*
-	Wiggins, Connor*	-	♦Koster, Bob*	-	♦Lazure, Albert C. Jr.*
1944	♦Clarke, Robert*	1955	♦Mahoney, Leo*	-	♦MacPhail, Ralph Jr.*
-	♦Dowling, Russell*	-	♦Miller, Gail Rolle*	-	Matthews, James E.*
-	♦Repaske, Anne*	-	♦Ball, Joan McCaskill*	-	Matthews, Jane Crunkelton*
-	♦White, Edwin*	-	♦Block, John*	-	♦Weihe, Ted*
1945	♦Dodge, Virginia Snarr*	-	♦Fang, Andrew*	1962	♦Appler, Nancy Babb*
-	♦Roberts, Edith Fox*	-	♦Fang, Patricia T.*	-	♦Gott, Mary**
1946	Altman, Mary Keating*	-	♦Garverick, Michael*	-	♦Grove, Larry*
-	♦Brewster, Clare Stieg*	-	♦Henretty, Donald*	-	♦Hill, Peter C.*
1947	♦Carroll, Eugene*	1956	♦Holston, James R.*	-	♦Illi, Louis F. Jr.*
-	♦Emerson, Billie Jo Hickman*	-	♦Kale, Charles Jr.*	-	♦Shawen, Edgar*
-	♦Hazel, John T. Jr.**	-	♦Reymond, Ralph*	1963	♦Delaney, Bill*
-	♦Meinberg, Richard Pete*	-	♦Snyder, Arnold Jr.*	-	♦Derr, Vince*
1948	♦Meinberg, Mary Hayes*	-	♦Stec, Ruth Lea**	-	♦Falls, Doris Brown*
-	♦Shore, Ella*	-	♦Garverick, Ruth Clark*	-	♦Hawthorne, Randall S.*
-	♦Stevens, James*	-	♦George, Nancy L.*	-	♦Masters, John H.*
-	Thomasson, Charles**	-	♦Lampshire, Brad*	-	♦Wright, Larry*
-	♦Upperco, Jesse*	-	Norquest, Robert*	1964	♦Barnhart, Bill*
-	♦Williams, Robert*	-	♦Nyman, Connie*	-	♦Cracraft, Patricia Norquest*
-	♦Wolf, Walter F.*	-	♦Speakman, Clayton*	-	Koiner, Michael*
1949	Reunion Committe, Class of 1949***	1957	♦Basile, Carol***	-	♦MacDonald, Robert U.*
1951	♦Armacost, James*	-	♦Fang, Don**	-	♦Payne, Thomas*
-	♦Chappelle, Daniel E.*	-	♦Gawen, Perry*	-	♦Sonnenschein, Bonnie Skookums*
-	♦Fulcomer, Michael*	-	♦Jane Gunter Trust*****	1965	♦Lowe, John*
-	♦Getts, Ann Pettit*	-	♦Neale, Hobby M.*	-	♦Skinner, Robert E.*
-	♦Gillions, Walter*	-	♦Neff, Charles Ed*	1966	♦Bjorlo, Phillip***
-	♦Melnick, Bert W.*	-	♦Souders, William*	-	Class of 1966 Reunion**
-	♦Wardrip, George*	-	Veenstra, Gail Roberts*	-	Hart, Paul****
1952	♦Bernstein, Betty Koster*	1958	1958 Varsity Eight*	-	♦Moreno, Laurel Rolfe***
-	♦Cuje, Lennie*	-	♦Arnold, Bruce*	-	♦Reimann, Kell*
-	Illyes, Sarah Redd*	-	♦Cook, Steve*	-	♦Steger, Jeffrey*
-	♦MacGill, Bruce J.*	-	♦Fowler, George*	-	♦Thomson, James*
1953	♦Baldwin, Robert C.*	1959	♦Harmon, Ann Stevens*	1967	♦Almand, James F.*
		-	♦Hood, Patricia J. Watson*	-	♦Barham, Patricia Hood*
		-	♦Hunter, Bob*	-	♦Frank, Francine Stoss*
		-	♦Parsons, Robert*	1968	Hawthorne, Holly*
		-	♦Pendleton, Winston*	1969	♦Chisnell, Tom*
		-	♦Peterson, Joan Miller*	1970	♦Ensminger, Luther Jr.*
		-	♦Smith, Barry LaMont*	-	♦Finta, John*
		-	Wittenberg, Katherine Hunter*	-	♦Nicholas, Marlene Stoss*
		-	♦Carroll, J. Daniel*	-	♦Raizen, Michael*
		-	♦Clineburg, Stephen*	-	♦Sheppard, Herbert*
		-	♦Evans, James E.*	-	♦Turner, Lana Everett*
		-	♦Janes, Ernest*	1971	♦Brown, Joanna Miller**
		-	♦Johnson, Carolyn*	-	♦Connell, Ann Cohen*
		-	♦Johnson, Max W.*	-	♦Thompson, Blair*
		-	McKerahan, Ron*	1972	♦Coffin, Rick*
		-	♦Okada, Katharine Dudley*	-	McInturff, Gary*
		-	♦Pilcher, Walter H.**	-	♦Pallansch, Mark**
		-	♦Pitts, James E. III***	1973	♦Macekura, Dede Cianciosi*
		-	♦Shaker, Richard J.*	-	♦McNabb, John*
		-	♦Burghart, Louise Dodge*	-	♦Sanford, Robin*



- 1974 ♦Chisholm, Gail\*
- ♦Houston, David S.\*
- 1975 ♦Charping, Linda Hahne\*
- ♦Hix, Cathy Bonneville\*
- ♦Praktish, Tom\*
- ♦Strehle, Mary Dodge\*
- 1976 Alt, Deborah Frank\*
- ♦Asmus, George\*
- ♦Paulson, Liane\*\*\*
- ♦Switzer, Gary\*
- 1977 ♦Andrews, Elizabeth\*
- ♦Cianciosi, Michael\*
- ♦Voulsides, Maria\*
- 1978 ♦Fiorio, Livio\*
- ♦Rhodes, Stephen\*
- ♦Thomas, Johnathan\*
- ♦Vera, Kristi\*
- 1980 Kallenborn, Patricia Swinson\*
- 1982 ♦Jackson, Michael\*
- ♦MacDonald, Scott\*
- ♦Weber, Elizabeth\*
- 1983 ♦Dobson, Eric\*
- ♦Phillips, Dianne\*
- ♦Rosenberg, Eric\*
- 1989 Lazure, Errol\*
- 1990 Callahan, Megan\*
- 1991 ♦Wharwood, Dave\*
- 1995 ♦Congable, Sarah Harrick\*
- 1996 ♦Peck, John C.\*
- 1998 ♦Bond, Erin Felker\*\*
- ♦Rockwell, Kelly\*\*\*
- 2002 Bakke, Whitney Sado\*
- ♦Duke, Sarah Strehle\*
- ♦Macekura, Stephen\*
- 2011 ♦Chisholm, Sarah\*

---

## FACULTY & STAFF

- ♦Chisnell, Tom\*
- ♦Congable, Sarah Harrick\*
- ♦Cruz, Margarita\*
- ♦Freeman, Tucker\*
- ♦Jeens, Peggy\*
- ♦Ledyard, Anne\*
- ♦Martin, Mary Byrd\*
- ♦McCarthy, Jeffrey\*
- ♦Norton, Jeana\*
- ♦Primosch, Mary Jo\*\*
- ♦Revere, Ronald\*
- ♦Sauter, Catherine\*
- ♦Sharbaugh, William\*

---

## PARENTS & COMMUNITY

- ♦AXA Employee match\*
- ♦Bornbusch, Alan & Elizabeth Lyons\*
- ♦Felker, Carol A\*
- ♦Franklin, Howard & Jacqueline\*

- ♦Goodman, Jack and Laurie Effron\*\*\*
- ♦Jane Gunter Trust\*\*\*\*
- ♦Henderson, Linda and Clay\*
- ♦MacTavish, Alison\*
- ♦Rieth, Susan\*
- ♦Riggs, Leslie\*\*
- ♦Sabatino, Christine\*
- ♦Sauter, Catherine & Larry\*
- ♦Short, Deborah\*\*\*\*
- ♦W-L Alumni Association\*\*\*
- ♦W-L PTA\*\*\*

---

## IN MEMORY OF

- Miss Mabel Allen, Faculty** by
  - ♦Hazel, John T.\*
- Capt. Snowden Arthur, Faculty** by
  - ♦Rosenberg, Eric\*
- Edyn Bauman** by
  - ♦Sharbaugh, William\*
- Frank Benson '59** by
  - ♦1958 Varsity Eight
- Raymond Black, Jr. '58** by
  - Glancy, Suzanne Black\*
- Charles L. Bonneville, Sr. '52** by
  - ♦Hix, Cathy Bonneville\*
- Guido Cavallo, Faculty** by
  - ♦Macekura, Dede Cianciosi\*
- Patrick J. Conte '52** by
  - ♦Conte, Jean Wubbold\*
- Jim Crawley** by
  - ♦Sharbaugh, William\*
- John Dineen '64** by
  - ♦Payne, Thomas\*
- Julian F. Frank '35** by
  - ♦Alt, Deborah Frank\*
- Patrick E. Frank '60** by
  - ♦Alt, Deborah Frank\*
- Margaret Rice Gawen '32** by
  - ♦Gawen, Perry\*
- Ann Lefferts Guthridge '64** by
  - ♦Barnhart, Bill\*
  - ♦Mulloy, Jack\*
  - ♦Sonnenschein, Bonnie Skookums\*
- John Harocopos** by
  - ♦Sharbaugh, William\*
- Janet Rice Hedrich '32** by
  - ♦Gawen, Perry\*
- Simon Korczowski** by
  - ♦Andrews, Elizabeth\*
- Joseph Krauth, father of Phil Krauth** by
  - ♦Felker, Carol A\*
- Nancy Lewis Lancaster '67** by
  - ♦Barham, Patricia Hood\*
- Sally B. Loving** by
  - ♦Crown, James\*
- Warren MacDonald '79** by
  - ♦MacDonald, Scott\*

## Admiral Wesley Lee McDonald '42

- ♦ Clark, Patricia Pumphrey\*\*

## Jim Mon

- ♦ Sharbaugh, William\*

## Edward North, faculty

- ♦ Reymond, Ralph\*

## Harry Pitt, Wrestling Coach,

## State Champs '59

- ♦ MCKerahan, Ron\*

## David Powers '63

- ♦ Masters, John\*

## Jacqueline Sharbaugh

- ♦ Sharbaugh, William\*

## Wingate Sikes '58

- ♦ Fowler, George\*

## John Youngblood, Faculty

- ♦ Koiner, Michael\*

---

## IN HONOR OF

## Miss Mabel Allen, Faculty

- ♦ Weihe, Ted\*

## Sally Bassler, Faculty

- ♦ Jeens, Peggy\*

## Frank H. Benson, Jr. '59

- ♦ Clineburg, Stephen\*

## Ms. F. Booker, Faculty

- ♦ Cuje, Lennie\*

## Bob Brown '58

- ♦ Sharbaugh, William\*

## Members of the Class of 1949

Reunion Committee of the Class of 1949\*\*\*

## Class of 1976

- ♦ Asmus, George\*

## Margarita Cruz, Faculty

- ♦ Sharbaugh, William\*

## Coach "Pop" Deming

Thomasson, Charles\*\*

## John Englishman, Faculty

- ♦ Almand, James\*

- ♦ Jeens, Peggy\*

## Family and Friends, 1930s to the present

- ♦ Franklin, Howard & Jacqueline\*

## Dr. Lenore Geweke, Faculty

Hart, Paul\*\*\*\*

## Lori Grimm '76, Faculty

- ♦ John, C. Peck\*

## Linda Henderson

- ♦ Ledyard, Anne\*

## Barry Huitema, Faculty

- ♦ John, C. Peck\*

## Hiromi Isobe, Faculty & Pedro Chin

- ♦ Sauter, Catherine & Larry\*

## Peggy Jeens, Faculty

- ♦ Sharbaugh, William\*

## Simon Korczowski, Faculty

Hart, Paul\*\*\*\*

## IN HONOR OF

### Phil Krauth, Faculty by

- ♦ Ledyard, Anne\*
- ♦ Sharbaugh, William\*

### Anne Ledyard, Faculty by

- ♦ Jeens, Peggy\*
- ♦ Sharbaugh, William\*

### Ian S. MacTavish '01 by

- ♦ MacTavish, Alison

### Ling Mangan by

- ♦ Sharbaugh, William\*

### Mary Martin, Faculty by

- ♦ Jeens, Peggy\*
- ♦ Sharbaugh, William\*

### Edward North '53 by

- ♦ Robbins, Patricia\*

### Loreen Novak '58 by

- ♦ Hood, Patricia Watson\*

### N. Carlotta Parr '68, Faculty by

- ♦ Jeens, Peggy\*
- ♦ Martin, Mary\*

### Present and past members of the Board of Washington-Lee High School Education Foundation, Inc. by

- ♦ Sharbaugh, William\*

### Bill & Rosemary Spanos by

- ♦ Sauter, Catherine & Larry\*

### Susan Thomas by

- ♦ Sharbaugh, William\*

### Three generation/eight W-L graduate Connaughton-Felker-Roberts Family by

- ♦ Felker, Carol A\*

### Mary Lib Tomb by

- ♦ Ledyard, Anne\*

### Paul Tyner '57 by

- ♦ Souders, William\*

### W-L Teachers and Administrators by

- ♦ Goodman, Jack & Laurie Effron\*\*\*

### Dave Walters by

- ♦ Sauter, Catherine & Larry\*

### Tim Wyatt, Faculty by

- ♦ Jeens, Peggy\*

## Jane Ann Gunter Trust

Jane Ann Gunter, W-L Class of 1957, passed away in August of 2015. Jane kindly remembered the W-L Education Foundation in her Trust. We are so very grateful for her thoughtful planning, and are proud to award 5 student scholarships with her generous bequest.



### Donations & Membership dues:

For Foundation donations, which support the scholarships featured in the *Annual Bulletin*, please use the envelope insert or Paypal via the Foundation website.

For Alumni Association membership dues, please use the form on the facing page.



above

### Fans at the varsity basketball games

In 1949, the gym was located behind the auditorium (above left). A new gym, later named Campbell Gymnasium, was constructed in the 1952 addition. W-L's current gymnasium, still named Campbell Gymnasium, opened in 2010. Students cheer on the team with large "fatheads" or cutouts of the varsity players (above right). (photo credits: left photo, 1949 *Blue & Gray* on the Internet Archive; right photo, Patrick Kane / DMVpix.com)

below

### The '72 senior powder puff team huddles before facing their junior opponents.

(1972 *Blue & Gray* on the Internet Archive. The archive can be accessed via the W-L AA website.)



## Message from the W-L Alumni Association

The previous pages offer a glimpse into W-L—past and present, and most importantly, highlight the extraordinary achievements of the Foundation scholars. The Washington-Lee Alumni Association (W-L AA) is grateful to the Washington-Lee Education Foundation for this page in their *Annual Bulletin*. Both the Foundation and the W-L AA are committed to the success of W-L.

The mission of the W-L AA is to support W-L's alumni, the school, and the surrounding community through various programs and activities. Membership in the Association currently stands at over 300 and spans the decades from the 1930s to the present. Please consider joining or renewing your membership to contribute to the enduring legacy of your alma mater.

Here are some key initiatives undertaken by the W-L Alumni Association:

- ✦ Maintains an Alumni Database website with up-to-date information about classmates.
- ✦ Provides a Faculty Database with information on W-L teachers and administrators through the years.
- ✦ Updates the Reunion Scorecard—a single location for information about upcoming class reunions.
- ✦ Accepts and preserves donations of items of historical importance including school publications, trophies, sports memorabilia, cheerleader sweaters, programs, photos, sound recordings, movie film, prom dresses, posters, and more.
- ✦ Offers both digitally accesible editions of the *Blue & Gray* yearbooks (1927-2013) and past issues of the *Penman* magazine (1948-1973) through the W-L AA website.
- ✦ Produces *IN GENERAL*, a bi-annual newsletter for members.
- ✦ Offers financial support for school activities such as the Senior Class Graduation Night Boat Party, the Winter Bazaar each December benefiting the senior class, the Annual Spring Golf Tournament, and advertising in school publications.
- ✦ The design for a historic marker to be placed on the school's grounds.
- ✦ Contributes annually to the W-L High School Education Foundation scholarship fund.

Questions for the Alumni Association?  
Email: [wlalumni@gmail.com](mailto:wlalumni@gmail.com)

Memorabilia to donate?  
Contact Mary Dodge Strehle. Phone: 703 524 3915

The official school website with link to the new W-L AA website:  
[www.apsva.us/washingtonlee](http://www.apsva.us/washingtonlee)  
> Alumni tab

New W-L AA Website:  
[www.wlhasumni.org/wordpress/](http://www.wlhasumni.org/wordpress/)

### Washington-Lee High School Alumni Association Membership Application

Name (first, middle, last) \_\_\_\_\_

Maiden Name \_\_\_\_\_ Nickname \_\_\_\_\_ Graduating Class or Years Attended \_\_\_\_\_

Address \_\_\_\_\_

City \_\_\_\_\_ State \_\_\_\_\_ Zip \_\_\_\_\_

Home Phone \_\_\_\_\_ Alternate Phone \_\_\_\_\_

Email \_\_\_\_\_

The W-L Alumni Association is a  
501(c)(3) Charitable Organization

- Annual Membership \$10.00 (per person)
- Lifetime Membership \$100.00 (per person)
- Additional Donation to W-L AA \$ \_\_\_\_\_
- Contact me about W-L AA volunteer and leadership opportunities

Return application and membership dues to:

W-L High School Alumni Association  
1301 N Stafford Street  
Arlington, VA 22201

Make all checks payable to Washington-Lee High School Alumni Association, and mail separately from Foundation contributions.

office use \_\_\_/\_\_\_/\_\_\_ check # \_\_\_\_\_

Washington-Lee High School  
Education Foundation, Inc.  
P.O. Box 41595  
Arlington, Virginia 22204

**CHANGE SERVICE REQUESTED**